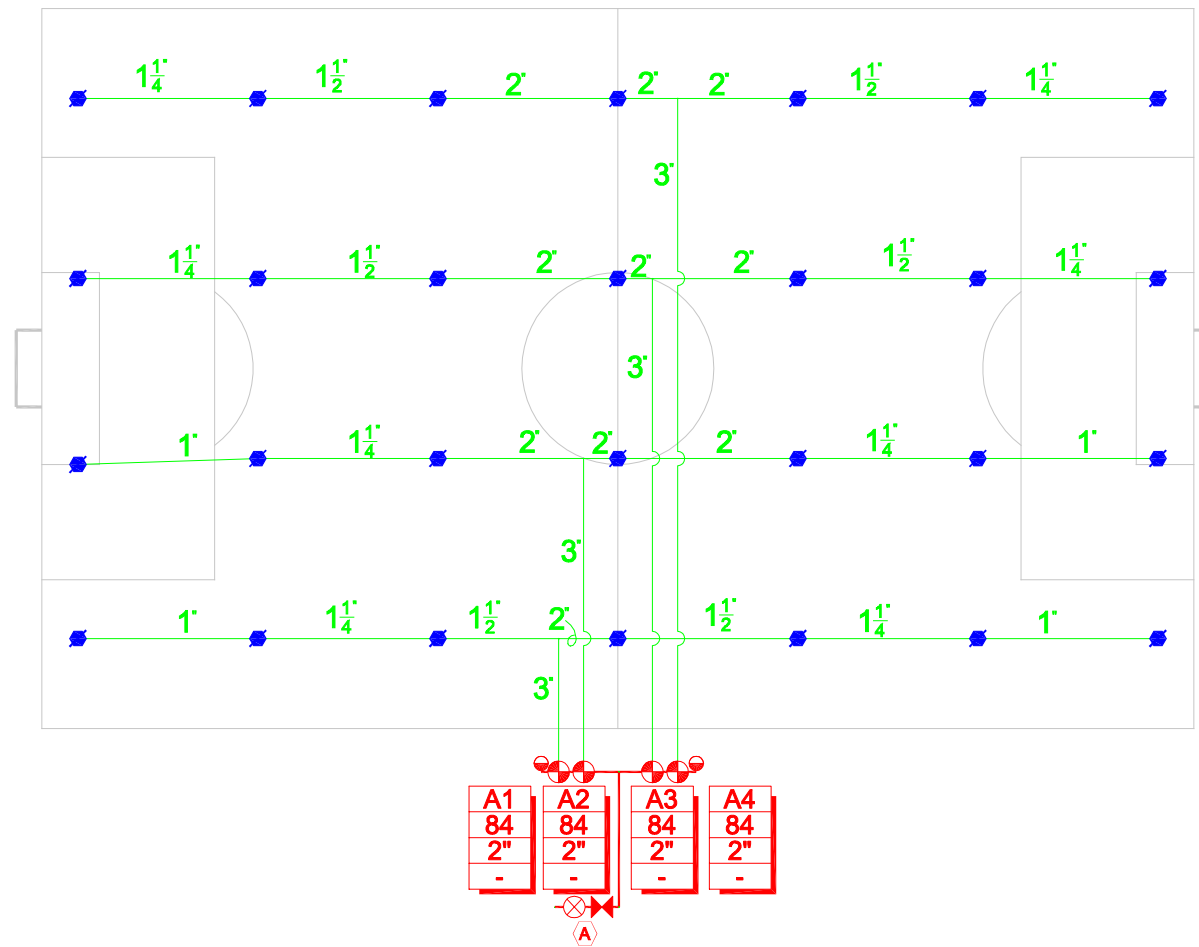


**SOCCER  
FIELD**

**8005  
SPRINKLER**



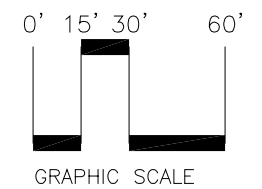
**GENERAL NOTES**

- DESIGN IS BASED UPON A MINIMUM FLOW OF 84 GPM AND A MINIMUM PRESSURE OF 75 PSI DOWNSTREAM OF BACKFLOW PREVENTION DEVICE. IF SUFFICIENT PRESSURE IS NOT AVAILABLE AT POINT-OF-CONNECTION INSTALL A BOOSTER PUMP. CONTACT A RAIN BIRD REPRESENTATIVE FOR THE APPROPRIATE PUMP FOR THE SITE.
- ADDITIONAL LATERALS OUTSIDE PLAY FIELD AREA MAY BE INSTALLED PROVIDED HYDRAULIC CAPABILITY OF SUPPLY IS NOT EXCEEDED.
- SPRINKLER LOCATIONS ARE TO SCALE. PIPE LOCATIONS ARE DIAGRAMMATIC.
- PROVIDE #55K-1 KEY (1" MALE OUTLET) AND SH-2 SWIVEL HOSE ELL FOR EACH QUICK COUPLING VALVE.

**LEGEND**

	QUANTITY	
	1	MAINLINE PIPE: CLASS 200 PVC (3-INCH SIZE)
	1	LATERAL PIPE: CLASS 160 PVC (SIZED AS SHOWN)
	4	INDICATES CONTROLLER AND CONTROLLER STATION NUMBER
	2	INDICATES LATERAL DISCHARGE IN GPM
	28	INDICATES REMOTE CONTROL VALVE SIZE
	1	

Project: \_\_\_\_\_



Date: \_\_\_\_\_

Drawing Number: \_\_\_\_\_



Rain Bird presents this plan as a typical sports field layout. Rain Bird offers no indemnity, expressed or implied, for projects installed from this plan. Since each site and system contains many variables, Rain Bird expressly recommends the use of a qualified irrigation designer.

**SF-9**